

THE SIGMAN

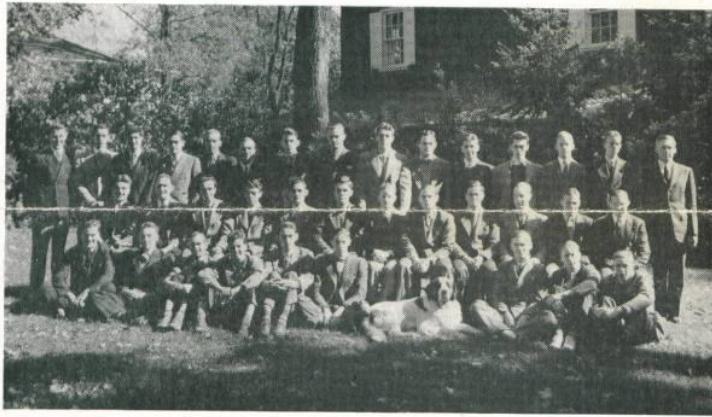
University of Michigan Chapter of Lambda Chi Alpha

Vol. X

ANN ARBOR, MICH., JANUARY, 1941

No. 2

Alumni Movement Rapidly Gains Momentum



Important progress toward more unified and co-ordinated effort by Sigma's active-alumni Chapters is now being made. The active group (above) has pledged itself to make an "all-out" Chapter effort. Even Sigma's big Saint Bernard, "Major" can be counted on to do his part!

22 Men Constitute The Dues Committee

MEMBERS of the dues collection committee of the Alumni Association of Sigma Zeta are:

Mark (Doc) Parnall, Chairman; L. A. (Windy) Meeks, Vincent Gottschalk, High Alpha; Aubrey Roberts, High Gamma; Allan F. Schmalzriedt, Alumni President; Leonard A. Keller, Alumni Vice-President.

Allen D. McCombs, Alumni Secretary; Raymond J. Hodgson, Alumni Treasurer; Perry J. Lockwood, F. P. (Duke) Zimmerli, Fred G. Metz, Rodgers Bradley, Jack MeLeod.

Ross E. MacNaughton, Chairman of former T. K. N.; Marley Piggott, Kent Howsher, Wirt Masten, William Renison, Paul Sterr, J. B. Mikesell, Fred Lange, William Duff.

Save This Date!
**FOUNDERS' DAY
BANQUET**
Sunday, March 30
Help Sigma Celebrate
the 28th Anniversary of
its Founding at Michigan

Sigma Honor Roll

LISTED below are the names of the Sigmas alumni who have paid their annual alumni dues, as of January 1, 1941:

Homer Marson
Curtis Bottom
Mark Parnall
F. P. Zimmerli
P. J. Lockwood
*Gordon H. Brown
H. B. Parker
R. J. Hodgson
W. T. Miller
R. A. Campbell
Prof. Jesse Ormondroyd
E. Appold
*Fred F. Lange
G. S. Shurman
J. P. Schaupner, Jr.
*William S. Armour
A. D. McCombs
*C. Glenn Winger
Neil A. Moore
*Dan C. Hungerford
H. C. Lamont
Al. F. Schmalzriedt
E. A. Schrader
R. J. Heusel
R. E. Madison
D. W. Lyon
*William H. Renison
*Ralph S. Lewis

(Please turn to page 3)

Sigma's Alumni Rally To Support Chapter

Graduates Show Re-newed Interest In House

IT is very gratifying to be able to report that Sigma's alumni are coming forward to take a more active part in supervising Chapter affairs—and for the first time in Sigma's 28 years on the Michigan Campus, we can really say that the Alumni Association is effectively functioning for the welfare of the house.

Last May, 1940, following a demand from the University that Sigma "must get more TANGIBLE alumni support or suffer the consequences," the Alumni Association launched a program designed to improve active-alumni relations and converted the Association into a "dues-paying" organization.

We are glad to report that to date a little more than \$500.00 in "voluntary" annual alumni dues have been paid into the treasury of the Alumni Association by 62 of Sigma's 450 alumni members. This is a good start and we hope to be able to tell you that 162 alumni have paid "their dues" in the next issue of the Sigman.

If we can keep up this "good work" in the matter of collecting alumni dues, Sigma will soon be in a position to meet the demand made by the University last fall that the Chapter's "financial condition must be substantially improved by June, 1941." Sigma's new alumni, the former Theta Nus, are to be congratulated on the splendid showing their group is making in paying the alumni dues. This group is helping Sigma in more ways than one. These boys are fighting shoulder to shoulder
(Please turn to page 4)

REMEMBER THESE DATES!

Jan. 15—Detroit Alumni Meeting
Feb. 23—Next Initiation
March 30—Founders' Day

THE SIGMAN

The official publication of Sigma Zeta of Lambda Chi Alpha at the University of Michigan issued quarterly for its alumni, friends, and sister Zetas.

J. W. MacMillan Editor

OFFICERS

- High Alpha . . . Vincent Gottschalk
High Beta Don Ryker
High Gamma Aubrey Roberts
High Tau Lawrence Handren
High Phi Charles Bush
High Epsilon Damon Woods
High Pi Prof. Ormondroyd

INITIATION AT SIGMA

Sunday, Feb. 23

Attention Former Theta Nus!

Lambda Chi Alpha Now Third Largest

LAMBDA CHI ALPHA began the 1940-41 academic year as the third-ranking Greek-letter college fraternity in the nation in the number of chapters. The two with a greater number of chapters (both are on the Michigan Campus) are: Sigma Alpha Epsilon 113 Kappa Sigma 110 LAMBDA CHI ALPHA 106 Other fraternities (gentile) at the University of Michigan with 30 or more chapters are:

- Phi Delta Theta 106
Sigma Chi 98
Sigma Nu 96
Alpha Tau Omega 94
Beta Theta Pi 90
Delta Tau Delta 75
Phi Gamma Delta 74
Sigma Phi Epsilon 70
Delta Upsilon 61
Phi Kappa Psi 52
Theta Chi 50
Delta Kappa Epsilon 47
Phi Sigma Kappa 44
Phi Kappa Tau 41
Phi Kappa Sigma 39
Tau Kappa Epsilon 36
Theta Xi 34
Chi Phi 34
Alpha Sigma Phi 33
Zeta Psi 30
Chi Psi 24
Alpha Delta Phi
Acacia
Alpha Kappa Lambda
Sigma Phi
Kappa Delta Rho
Hermitage
Psi Upsilon
Theta Delta Chi
Triangle
Trigon

What Is Done With Alumni Dues?

450 Alumni Can Place Chapter on Sound Basis

WHAT is your money (the "voluntary annual dues" you pay) to be used for? As explained in the RESOLUTION passed by both the alumni and active chapters in Ann Arbor on May 19, 1940, the money collected through annual alumni dues will . . . "be applied to retirement of house indebtedness" (that is, the \$42,000 Sigma house bonds) . . . "for the maintenance of the Sigman" (alumni-active chapters' relations bulletin—four issues a year) . . . "paying off back taxes of years 1930-31 and 1934-35" (which amount to \$1,400 and which items certainly should not be included in the current obligations chargeable to the Chapter's actives of 1940-41 . . . and for "publication by the alumni of an annual directory" (a complete roster of Sigma alumni with their current addresses—which, incidentally, is now being compiled and will be mailed shortly after the first of the year).

There is an active committee of alumni from Detroit and Ann Arbor who are working hard to set up a program whereby the Chapter will be not only SAVED this year but will be placed in a position where she can weather any gale that may blow up on the Michigan Campus. If you live far away from Ann Arbor, you are not expected to give your time and energy to "the cause" like those alumni close

by—BUT you can help immeasurably by paying your dues and seeing to it that all other Sigma alumni you meet also send in their dues.

Can anyone say that \$10.00 and \$5.00 annual dues are too great—when it may mean the difference between the success or failure of his Chapter? What member of Sigma wants to drive past the Chapter House on Washtenaw Avenue in Ann Arbor and have to recall: "There's my fraternity's former Chapter House. She's gone by the boards now. She's defunct! Sigma failed because we alumni couldn't or DIDN'T get behind the Chapter!" And that's just it: A fraternity Chapter with 450 members doesn't fail unless the ALUMNI FAIL!

Already 62 alumni have paid their dues! They make us certain that Sigma's alumni are NOT going to fail her!

Spirit—and spirit alone—is the only thing that will SAVE Sigma now! We believe in Sigma! We believe that there is enough spirit in this 28-year-old Chapter with her 450 alumni members to do the job. Let's not be sorry next fall that we FAILED Sigma in her hour of need. Sigma means a lot to most of us. Sigma deserves a better fate than failure. Every man with Sigma in his heart will do his utmost to SAVE the Chapter! For your

16 Fraternities "Off" Campus Since 1927

Table with 3 columns: Name, When, Where Founded, and Founded at Michigan. Lists 16 fraternities including Pi Kappa Alpha, Delta Chi, Phi Kappa Phi, Delta Phi, Alpha Chi Rho, Delta Alpha Epsilon, Delta Sigma Phi, Phi Mu Delta, Phi Mu Alpha, Sigma Zeta, Sigma Pi, Phi Kappa, THETA KAPPA NU, Tau Epsilon Phi, Tau Delta Phi, and Omicron Psi Phi.

Sigma Alumnus Pleads For Help To Chapter

Sigma Zeta is in grave danger of failing!

Sigma is in grave danger of failing because her 450 alumni members are not doing all they can to prevent the failure! You and I have not organized a "total defense" against the forces that are operating to bring about her destruction!

Let's face the facts! In 1925 in the midst of the wave of the greatest expansion college fraternities have ever experienced, Sigma established an \$125,000 property in Ann Arbor. This debt was to be retired from the Chapter's income in 20 years—based on the belief that the income derived from 35 active members living in the house would be sufficient to pay for the property at that length of time.

Situation Has Changed

Well, that set-up was quite satisfactory in the bountiful 20's when the Michigan campus abounded in fraternity material and students were comparatively easy to secure as members. Sigma did secure sufficient numbers of men during the 20's but the depression brought with it a different era—an era in which the number of available fraternity prospects dropped from 25 to 35 per cent and the securing of large numbers of men was simply out of the question. House membership declined! There were some good years but there were also poor years! Debts went unpaid! Back taxes accumulated! There was one call (about 1935) for money from the alumni and this group responded nobly in the crisis and the house somehow or other "got through" the depression—but much of the indebtedness went unpaid!

Two New Difficulties

Today Sigma is not only struggling with bonded indebtedness of \$42,000 (cut down from the 1925 figure of \$125,000), back taxes, interest on bonds, etc.—but has met new difficulties in the form of (1) an ultimatum from the University which states that the Chapter's financial position must be "substantially improved" by June, 1941 or Sigma will be ordered from the Michigan campus and (2) a lull in the present fraternity movement at Michigan which makes it virtually an impossibility to "fill the house" with 35 to 40 members—although a group of 25 to 30 men can be secured with reasonable effort consistent with quality.

In short, Sigma is trying to carry a load beyond its present income

possibilities. Its budget to meet the financial burden is based on a 1925 set-up and conditions—while its income possibilities in 1941 are limited by forces largely beyond its control. True, this past Fall Sigma worked hard on rushing and pledged 16 men. She will pledge still more men during the balance of the year. But the difficulty is this: For the past several years, Sigma has been trying to operate with some 20-odd men living in the house—trying to meet a financial burden with 20 to 25 men that was set-up originally to be carried by 30 to 35 men.

To Be No Deficit

However, after a careful analysis of Sigma's current operating expenses and income, it is confidently believed that there will be NO budget deficit this coming June. Revision of the budget with the University and Ann Arbor Trust Company (our financial manager) has corrected certain items whose

amounts were grossly inaccurate. The new budget is a true, honest and accurate picture of current expenses, and it is a budget that the active Chapter is in a position to meet.

We are building some new spirit in the house at Ann Arbor and the boys assure the alumni that they are "going to get on the ball." With both the active and alumni Chapters of Sigma working hard, we are soon going to be in a position where we can meet the University's demands. We've got to put our OWN house "in order!" That is OUR responsibility! After all, the demands made by the University for "better financial condition" are no greater than we should demand of ourselves!

Need Alumni Help

There is only one answer! There must be adequate financial help and direction of finances from Sigma's alumni!

What can you and I do to help SAVE Sigma? Well, first of all, you and I can pay our \$10.00 or \$5.00 annual dues. If you can't pay \$10.00 this year, then pay \$5.00 — and even two dollars would be welcome. But for gosh sakes, do SOMETHING to help the house! So far the Alumni Association has collected about \$500.00 in alumni dues from about 60 members. So far, so good—but we'll need at least \$1,000 to meet the demands of the University next June. We simply must meet the University's ultimatum that the "Chapter's financial condition must be SUBSTANTIALLY IMPROVED by June, 1941."

Get Behind Chapter!

Secondly, get behind the Chapter! Even if you can't pay your alumni dues this year, WRITE IN and "pep up" the actives in the house. They need encouragement! They're battling bad odds! They need YOUR encouragement to continue the battle against discouraging forces. Try to get to the house occasionally and raise the spirits of the actives. After all, they have done a good job of rushing this past Fall but they're afraid of what is going to happen NEXT JUNE.

This accumulation of debt (for example, about \$1,400 back taxes for the years 1931-32 and 1934-35) has been dropped in their laps and they don't see how they can successfully reduce it WITHOUT adequate financial help from the alumni.

Sigma Honor Roll

(Continued from page 1)

- *C. H. Beardsley
- *Stewart Kissingner
- R. B. Taylor
- Walter Truc
- *Morley M. Piggott
- A. A. Whiting, Jr.
- *Thomas L. Baker
- K. T. Davis
- King S. Anderson
- *Prof. William S. Housel
- *Jerome B. Mikesell
- F. W. Hartman
- J. J. Newman
- Arthur Koch
- *Arthur Vernon
- E. W. Foote
- S. C. Childs
- *Arthur Cook
- *Ross E. MacNaughton
- *Mark Stanton
- F. C. Empey
- Jack MacLeod
- *Sam P. Soluri
- Lawrence R. Hyslop
- L. D. Craig
- Roland Simmons
- Clarence L. Butler
- E. Clare Weber
- *Herman G. Bremenkampf
- Richard F. Weske
- Lieut. Col. A. H. Luse
- Fred H. Lincheid
- J. P. Thomas
- Robert J. Ernst

*Former Theta Kappa Nu

Here Are Answers To Question: "Is Sigma's Situation Hopeless?"

THE questions are naturally asked: Is Sigma's situation hopeless? "Will anything the alumni do now SAVE the Chapter?"

We can confidently say that Sigma's future is far from hopeless PROVIDED she gets proper assistance NOW which will get her past the threatened closing action of the University — scheduled for this coming June. The answer to the second question is that if ENOUGH alumni pay their dues THIS year and IMMEDIATELY, the Chapter will be SAVED! Briefly, the present situation at Sigma might be called an "if" situation. "If" she gets the proper financial support from the alumni, Sigma will get safely through the impending crisis —and "if" she doesn't, Sigma will likely be through this coming June.

Outside the drag of accumulated debt which constantly keeps the Chapter in hot water and furnishes the University with a terrific club, Sigma's state of health can be said to be quite satisfactory. This is probably best shown by the fact that the Chapter was able to step out in competition with all Michigan fraternities and pledge 16 men. This is only three less than were pledged by Chi Psi, the oldest fraternity on the Michigan campus (95 years at Michigan). Fraterni-

ties that are about to give up the ghost don't go out and pledge 16 men in a single rushing period. Meeting competition with every known national fraternity of any consequence (yes, they all have chapters at Michigan) and getting 16 men is indeed a healthful and encouraging sign. Several "old line" Michigan houses only pledged a half dozen men. The weak houses (and those whose alumni are not effectively organized) are going off the campus by two's and three's. Soon only the strong will remain and surely it is within the power of our 450 alumni to make Sigma strong.

It has not been the intention of the alumni that the Chapter should get into its present position—but it has been due largely to NEGLECT by the alumni. Sigma has already survived a World War and a major depression and if we'll all just help her past this "spot," she'll be on the Michigan campus a long time yet. With proper alumni support we can avoid the closing threat of the University until hell freezes over.

As more and more houses go off the campus, those which remain will benefit from the reduced pressure of competition for men. Sooner or later—if Sigma can remain on the campus—there will come a day when there again will be enough fraternity men for all the houses which remain. Since 1927 Sigma has seen 16 other houses go off the Michigan campus. She may never need join this growing "dead" list if you, Brother Alumnus, will give the proper aid.

This is the first time (excepting the crisis in 1935) that our alumni have been asked for any financial support for the Chapter in the 28 years that Sigma has been on the Michigan campus. We should have had a "dues paying" alumni association many years ago—and perhaps we wouldn't be in the "spot" we now find ourselves.

Why should we have stronger alumni relations with the active Chapter and why should we pay alumni dues? For this reason: We all know that the University authorities respect only those fraternity alumni groups that are effectively ORGANIZED, and have sufficient means available to keep out of financial jams.

Sigma's Alumni Rally To Support Chapter

(Continued from page 1)

with the loyal older Lambda Chis in an effort to make the Chapter in Ann Arbor all that it can and should be.

Sigma will never die at Michigan if ALL of us are DETERMINED NOT TO LET IT DIE! Spirit and willingness to work and to contribute aid will pull the Chapter through. We can believe nothing else but that every member of Sigma—whether a member of the active or alumni chapters—wants his fraternity at Michigan to succeed and is willing to make sacrifices and work toward that goal.

If we all unite in a sincere determination that Sigma is NOT going to be beaten—and we are all willing to fight like hell to avoid disaster — well, Sigma will be at Michigan for a long time yet and we'll have a Chapter of which we can be justly proud.

Alumni Notes

DAVE NICHOL, '32, who has been engaged in newspaper work since his graduation from the University, is now a foreign correspondent in Berlin.

* * *
ALUMNI OF LAMBDA CHI ALPHA will meet at the Intercollegiate Alumni Club, 13th floor, Penobscot Building, on Wednesday, January 15th, at 6:15 p.m.

* * *
ALUMNI WHO DESIRE information or who are able to contribute news to the Sigman should write to one of the following:

Raymond J. Hodgson, 607 Shelby St., Detroit; Ross E. MacNaughton, 610 Murphy Bldg., Detroit; Mark Parnall, 8415 E. Jefferson Ave., Detroit; Allan F. Schmalzriedt, 1442 Majestic Bldg., Detroit.

* * *
MARK STANTON, '30, (former T.K.N.) is still in the grocery business with his father in Nunda, N. Y. Mark was a week-end guest at Sigma Chapter when he attended the Illinois game on October 19. He brought with him to Ann Arbor one of the Charter Members of Sigma, F. C. Empey, '13.

In Memoriam

IT is with sincere regret that we report the death, on December 10, of Charles Raymond (Ray) Rasmussen '28. Only 35 years old at the time of his death, his contribution to the fraternity—particularly as a hard worker in former T.K.N.—was notable. Joining the fraternity in 1926, he served as treasurer in 1928. He worked tirelessly and unselfishly both in Chapter and alumni endeavors. His latest duties as Corresponding Secretary of former Michigan Alpha T.K.N. brought him into close contact with Lambda Chi Alpha's Central Office, handling details of the union in 1939. Ray had been ill for nearly six months. He is survived by his wife, mother and brother. Lambda Chi's have lost a splendid Brother and a grand fellow.

folded with

Have YOU Paid YOUR Dues?	
June 1940—June 1941	
1-5 Years out of School.....	\$5
More than 5 Years.....	\$10